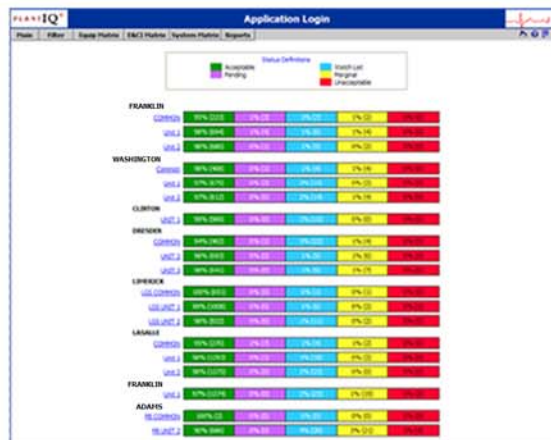


**WHAT IS PLANTI<sup>Q</sup>?**

It is a web-based software tool that collects, stores, and reports the critical information associated with a Predictive Maintenance (PdM) Program. Equipment, System, Unit, and even Facility health can be determined easily. Key Performance Indicators are automatically generated and information can be drawn to support multiple levels in the organization with minimal training. The scalable architecture of the system can support a single facility or an entire enterprise.

**Features/Benefits**

- User-Defined Views and Filters
- Automated Key Performance Indicators (KPIs)
- Component Monitoring Plans
- Tracking of Analysis Results
- Knowledge Capture/Sharing
- Facilitates Enterprise-wide Communication
- Cost Benefit Analysis
- Automated Data Capture
- Work Management Integration
- Data Trending
- Email Notifications
- Scalable Architecture
- Easy to Implement
- Low Maintenance Cost
- Standardizes Pdm Process
- Minimal Training

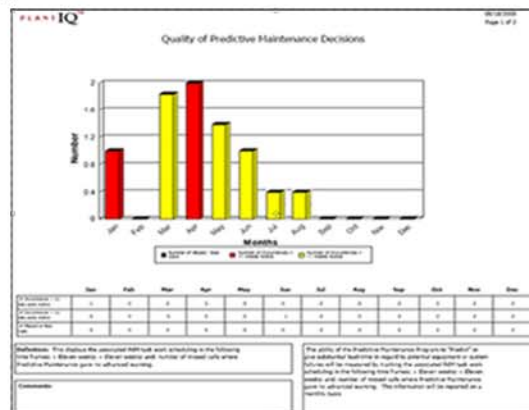


**TECHNOLOGY EXAMS**

PlantIQ<sup>®</sup> provides the framework for capturing the critical information resulting from the application of diagnostic technologies. This information is organized so that overall equipment health can be quickly determined. Equipment Assessments can also be created that associate the relevant Technology Exams as supporting information and directly feed information to Key Performance Indicators. Files can also be attached at any level with additional supporting information.

**REPORTING**

PlantIQ<sup>®</sup> utilizes a powerful reporting engine which features rich reporting functionality. Reports are dynamically generated based on user-defined criteria that is very extensive. Within PlantIQ<sup>®</sup>, it is easy to compare data between systems, units, and even facilities. The data is organized so that Key Performance Indicators can be automatically generated. Links to reports can be emailed to upper-level managers or other persons and accessed without them having any training on or knowledge of PlantIQ<sup>®</sup>.



Facility	Unit	System	Equipment	Overall Status	Operational Status	Predictive	Vibration	Oil/Lube	IR/FAKRS	CB/DET
BAV	30	AB	SAB0P Bent Axis Transfer Pump	Acceptable	Acceptable	Acceptable	Acceptable	Acceptable	Acceptable	Acceptable
BAV	30	AB	SAB0A 54 Marica Header Tank Pump	Acceptable	Acceptable	Acceptable	Acceptable	Acceptable	Acceptable	Acceptable
BAV	30	AB	SAB0W 38 Marica Header Tank Pump	Acceptable	Acceptable	Acceptable	Acceptable	Acceptable	Acceptable	Acceptable
BAV	30	AB	SAB0T Check Valve	Acceptable	Acceptable	Acceptable	Acceptable	Acceptable	Acceptable	Acceptable
BAV	30	AC	SAC0R	Acceptable	Acceptable	Acceptable	Acceptable	Acceptable	Acceptable	Acceptable
BAV	30	AC	SAC0E	Acceptable	Acceptable	Acceptable	Acceptable	Acceptable	Acceptable	Acceptable

**EQUIPMENT MATRIX**

The Equipment Matrix is the core feature of PlantIQ<sup>®</sup>. The Equipment Matrix displays the Equipment, the overall health, and the health of each diagnostic technology. This matrix is dynamic and user configurable so that relevant equipment and technologies can be selected.